

The Conservation and Comeback of Heritage Breed Sheep

Presenters:

Jeannette Beranger

Senior Program Manager
The Livestock Conservancy

Producer Panelists: Leslie Johnson, Brian Larson, and Oogie McGuire

Host/Moderator: Jay Parsons

September 8, 2020



This webinar is made possible with funding support from the Let's Grow Committee of the American Sheep Industry Association.



**THE LIVESTOCK
CONSERVANCY™**

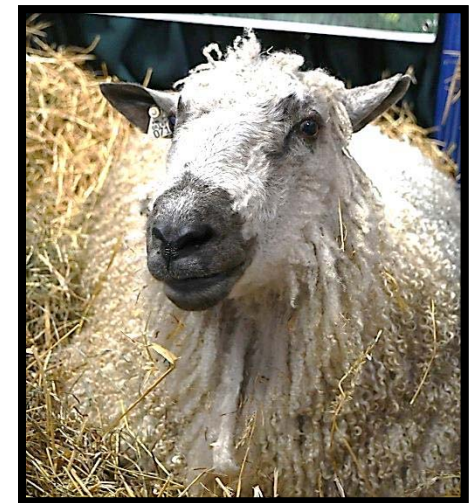
The Conservation and Comeback of Heritage Sheep





Wool Breeds – British Longwools

- **Cotswold**
- **Leicester**
- **Lincoln**
- **Teeswater**





British Breeds - White

- **Clun Forest**
- **Dorset Horn**
- **Oxford**
- **Shropshire**
- **Southdown**





British Breeds - Colored

- **Black Welsh Mountain**
- **Jacob**
- **Shetland**





American Breeds – Spanish Descent

- **Florida Cracker**
- **Gulf Coast**
- **Navajo Churro**
- **Santa Cruz**





American Breeds

- **Hog Island**
- **Karakul – American**
- **Romeldale/CVM**
- **Tunis**





Hair Sheep

- **St. Croix**
- **Wiltshire horn**





Hair Sheep

- **Barbados Blackbelly**



*Not to be confused with
American Barbados*





What we do

- Census
- Maintain herdbooks
- DNA analysis
- Field documentation
- Educational workshops
- Marketing & promotion





Building Market for Rare Breeds



PASSPORT



SHAVE 'EM TO SAVE 'EM
A Livestock Conservancy Initiative

Romeldale/CVM
Country of Origin: United States
Micon Count: 21-25
Conservation Status: Threatened

Breed: _____
Sold by: _____
Date: _____

Breed: _____
Sold by: _____
Date: _____

Date Purchased: _____
Project: _____
Date Completed: _____

RareWool.org



Survey



Roving—price/lb --increase of 109%

Washed fleeces--price/pound increase of 38%

Combed wool—price/lb increase of 27%

HAIR--increase of 91% (SE2 interest boosted sales)

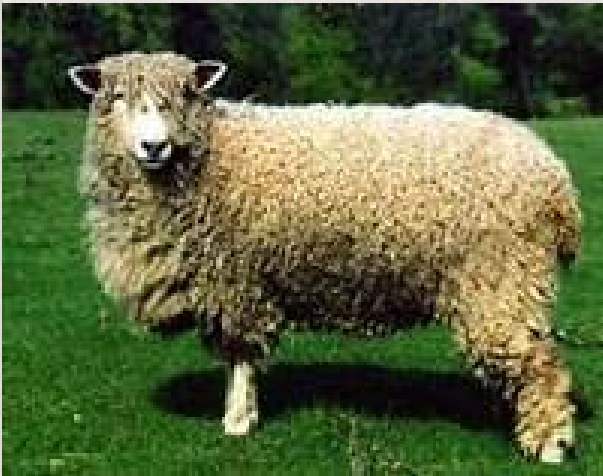
Biggest challenges—

general public not familiar with heritage breeds;
both artists and providers need education on
wool qualities;
providers need marketing training to target their
sales to the right audiences.

Heritage Longwool Breeds



Classic Longwools!



Cotswold



Leicester Longwool



Lincoln Longwool

Lock/Staple Formation



Traditional Locks are Protective of Wool Quality!



Distinctive Head, Ears & Skin



UK Lincoln Longwool Genetics



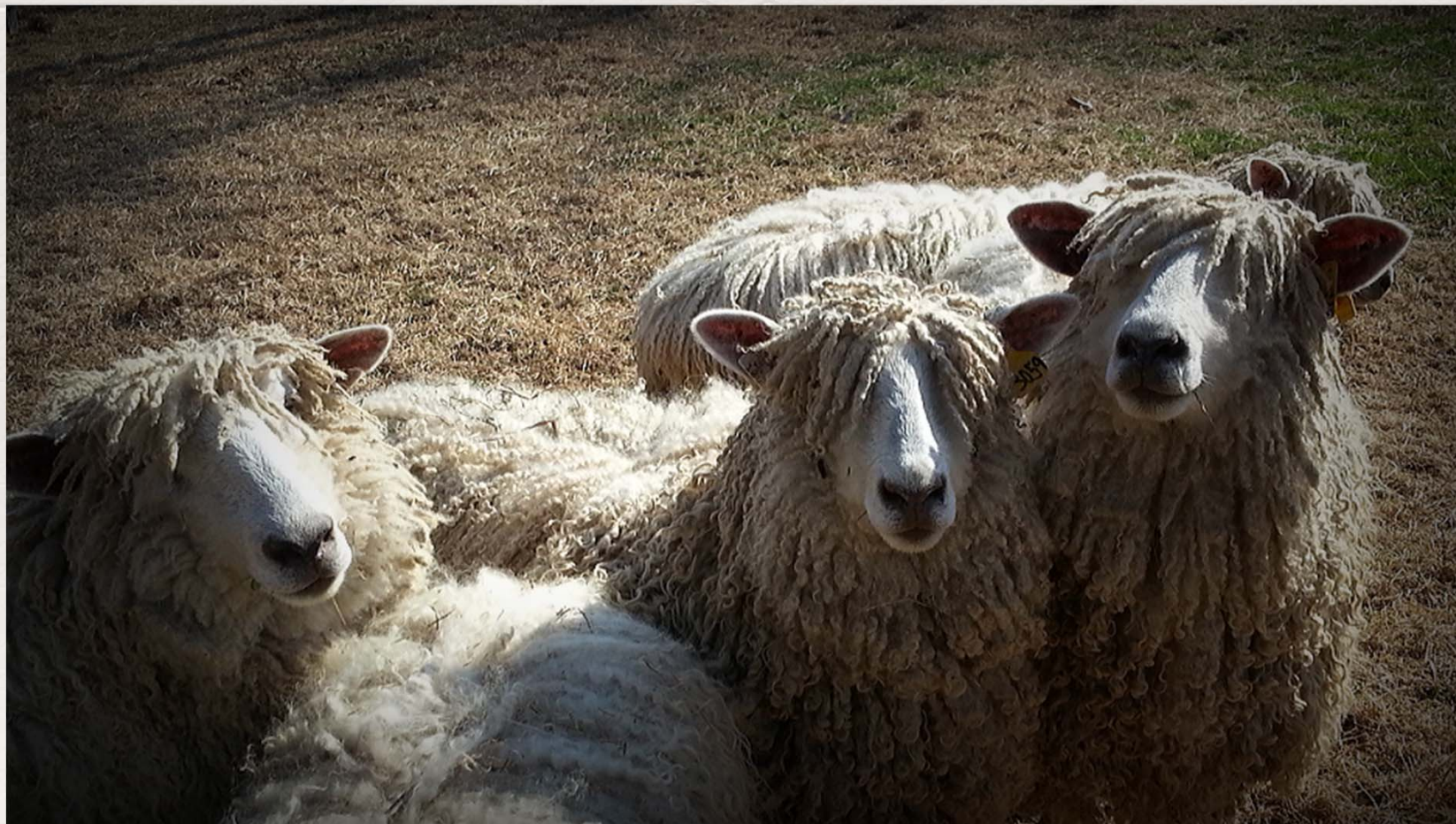
1/4 to 3/4 UK Genetics



Half-Blood UK Rams



Thank You!





Kambar
Farm





Karakul Lamb coat



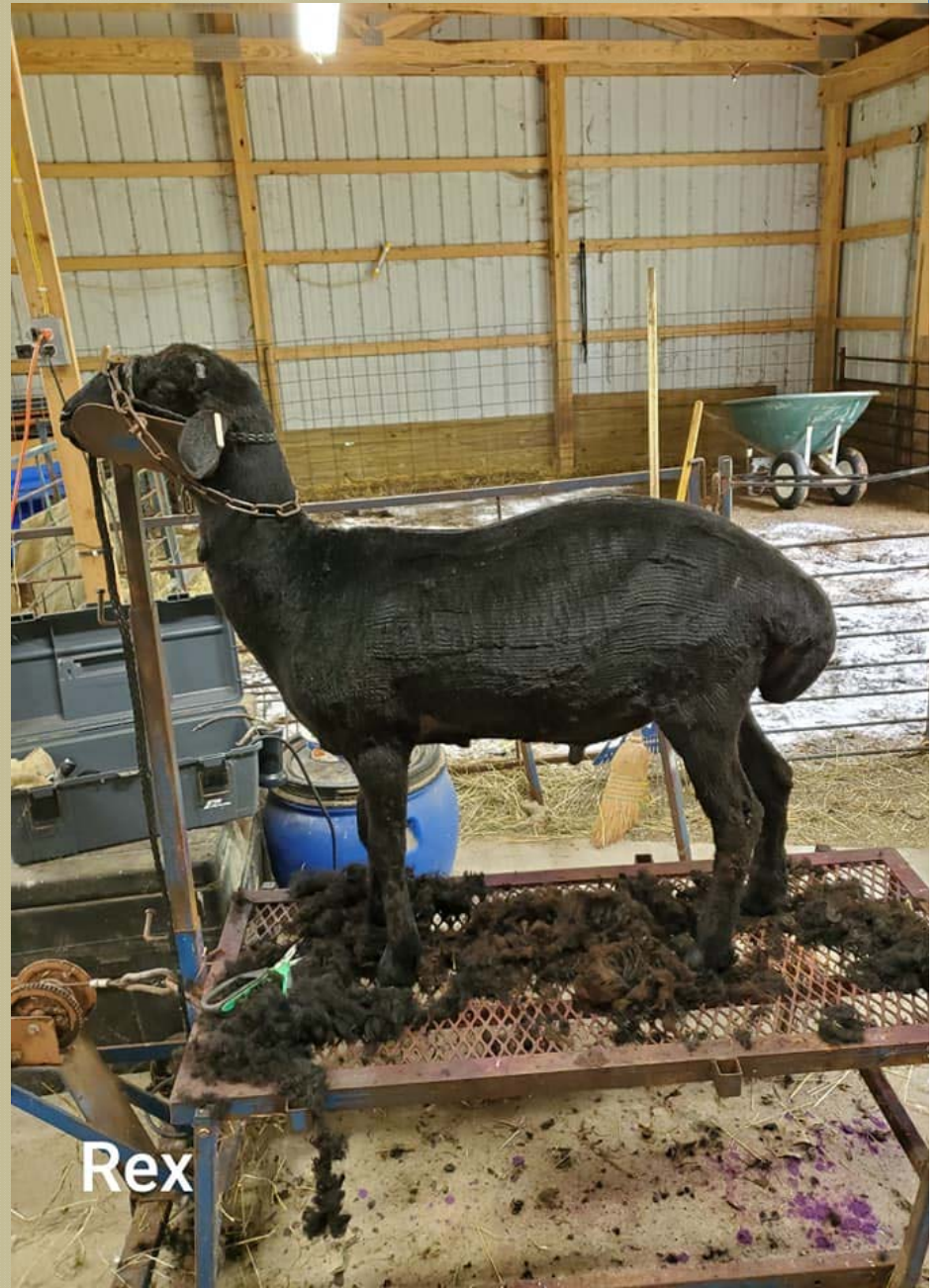
**Anakus
Karakuls**



 Kambar
Farm



Rex Pine Lane Farm



Rex



Pine Lane Farm



Anakus Karakuls



 Kambar
Farm



 Kambar
Farm

 Kambar
Farm







Anakus
Karakuls



American Karakul
Gathering 1993



Pine Lane Farm





 Kambar
Farm



 Kambar
Farm



 Kambar
Farm



 Kambar
Farm



 Kambar
Farm







Kambar
Farm



Black Welsh Mountain Sheep



Oogie McGuire
Desert Weyr, LLC
oogiem@desertweyr.co



Black Welsh Advantages

- High Performance on Forages Alone
- Rugged Sheep that Survive
- Easy Lambing
- Excellent Meat Quality
- Butcher at Any Age
- Small Size



Black Welsh Disadvantages

- Non-Flocking Breed
- Horned Rams-Fencing Issues
- Slow to Medium Growth to Butcher Size
- Black Wool requires Creative Marketing
- Limited Gene Pool in North America



The Conservation and Comeback of Heritage Breed Sheep

Presenters:

Jeannette Beranger

Senior Program Manager
The Livestock Conservancy

Producer Panelists: Leslie Johnson, Brian Larson, and Oogie McGuire

Host/Moderator: Jay Parsons

September 8, 2020



This webinar is made possible with funding support from the Let's Grow Committee of the American Sheep Industry Association.